

Sculptural Traditions of Madhya Pradesh

An Exploration of the Region's Classical Traditions Through Rare Masterpieces Preserved by the Directorate of Archaeology, Archives & Museums

BHOPAL, MADHYA PRADESH, INDIA, April 15, 2025 /EINPresswire.com/ -- The Directorate of Archaeology, Archives, and Museums of Madhya Pradesh proudly preserves a remarkable collection of sculptural masterpieces that reflect the region's deep cultural, religious, and artistic legacy. These works, spanning centuries, offer a glimpse into the diverse traditions that have shaped India's heritage.

Among the standout pieces is the Devi Chamunda sculpture from Vidisha, portraying the goddess in her fierce form with striking red eyes and a skull-adorned headdress. This artwork highlights Vidisha's historical significance as a center for Saptamatrika worship and the rise of the Shakti cult, showcasing exceptional artistry and spiritual depth.

Another notable work, the Ravananugraha Shiva sculpture, captures the mythological moment of Ravana attempting to lift Mount Kailasha. Featuring intricate details of divine figures like Brahma, Vishnu, and Kartikeya, this piece reflects the craftsmanship of medieval India under the influence of dynasties such as the Paramaras and Chandelas.

The Harihara sculpture, blending attributes of Vishnu and Shiva, exemplifies religious harmony. Originating in the Kushana period, this deity's depiction underscores the coexistence of Vaishnavism and Shaivism, celebrated through remarkable artistic skill.

Housed in the Gwalior Central Archaeological Museum, the 10th–11th century Shalabhanjika sculpture from Gyaspur, Vidisha, is globally renowned. Crafted in red sandstone, it portrays a woman in a graceful tribhanga posture, often called the "Mona Lisa of India" for her serene smile and intricate detailing.



Adorned with skulls and bulging eyes, this sculpture embodies the intensity of tantric iconography

The Gupta-period Kartikeya sculpture, another gem, depicts the war god with balanced symmetry, holding a cock and adorned with elegant ornaments. Its presence on Gupta-era coins and in texts like the Mahabharata highlights its historical reverence.

At the State Museum in Bhopal, the Devi Indrani sculpture stands out with its tribhanga pose, holding a vajra and a flower, distinguished by elaborate ornamentation and a radiant prabhamandala.

The Directorate of Archaeology, Archives, and Museums remains dedicated to safeguarding these treasures, ensuring their legacy inspires future generations.

KK

Directorate of Archaeology, Archives and Museums

[email us here](#)

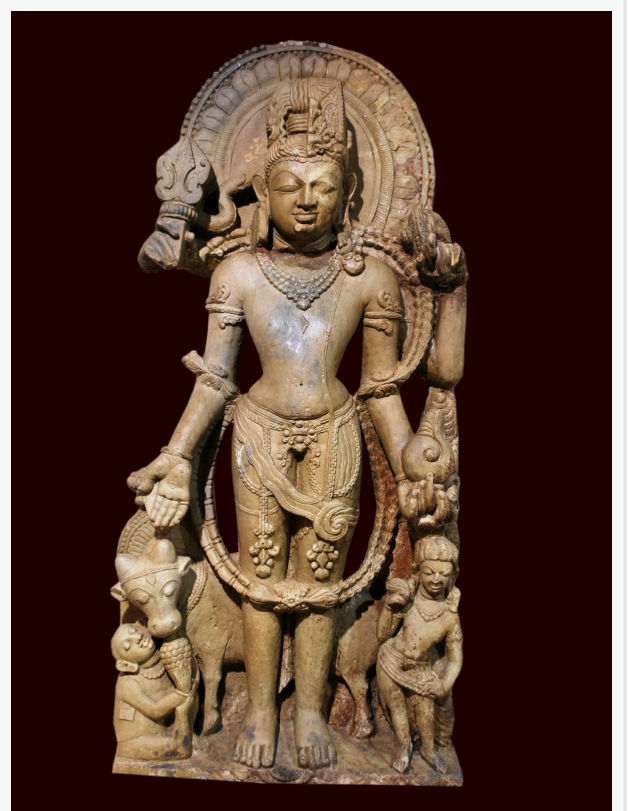
Visit us on social media:

[Facebook](#)

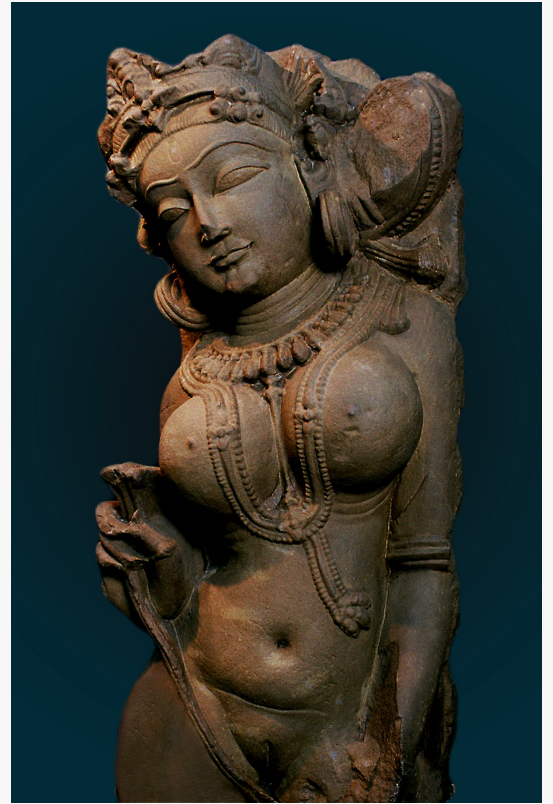
[X](#)

[Instagram](#)

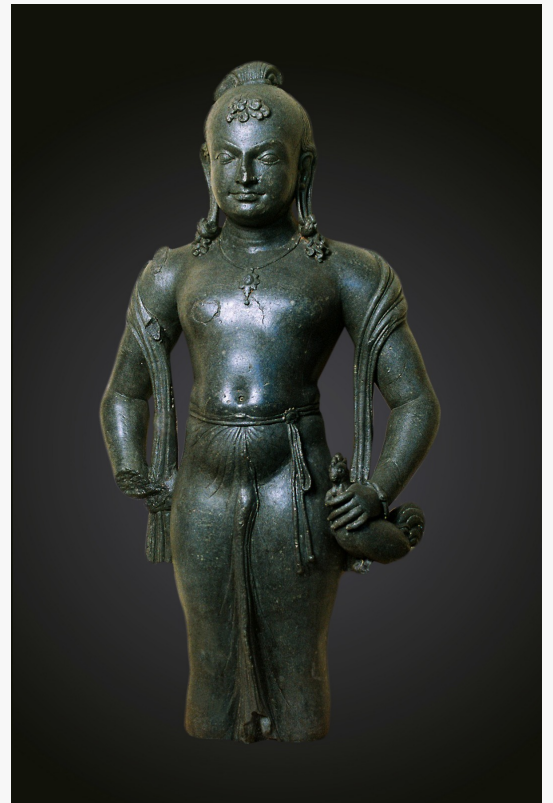
[YouTube](#)



Symbolizing religious harmony, this sculpture illustrates syncretism in early Indian art.



Delicate details and ornamentation mark this sculpture's unique style among the Saptamatrikas



Kartikeya reflects Gupta-era artistic balance and symbolism



This composition narrates a mythological tale with intricate detail and spiritual depth

This press release can be viewed online at: <https://www.einpresswire.com/article/803365689>

EIN Presswire's priority is source transparency. We do not allow opaque clients, and our editors try to be careful about weeding out false and misleading content. As a user, if you see something we have missed, please do bring it to our attention. Your help is welcome. EIN Presswire, Everyone's Internet News Presswire™, tries to define some of the boundaries that are reasonable in today's world. Please see our Editorial Guidelines for more information.

© 1995-2025 Newsmatics Inc. All Right Reserved.